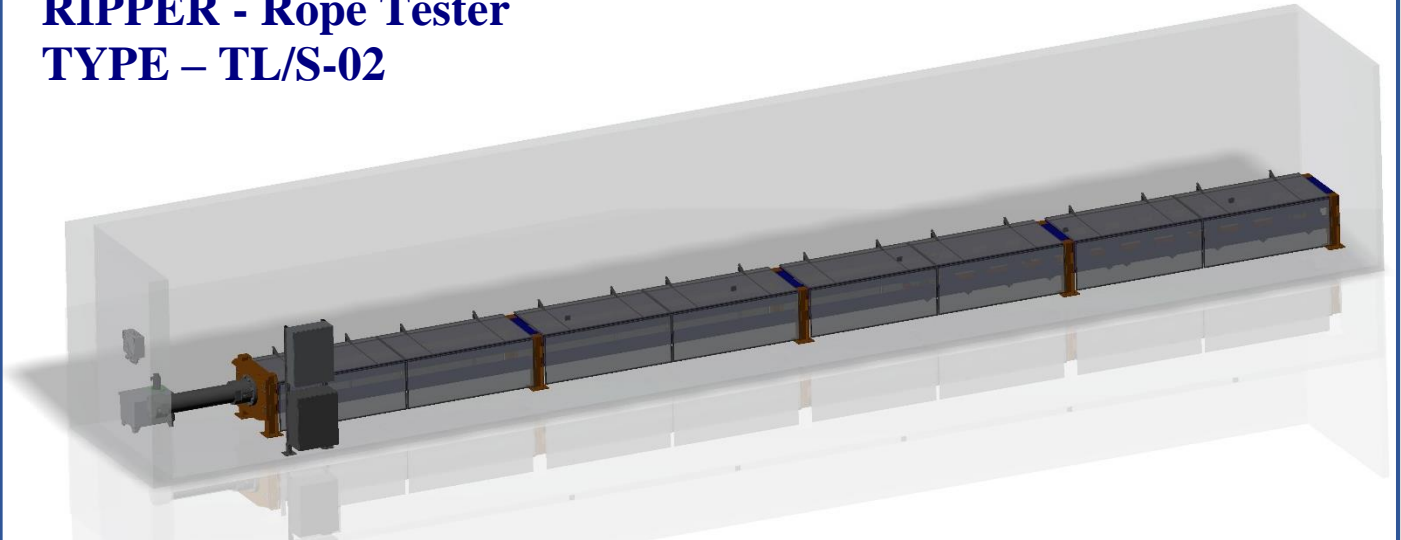




Business name: **MDB Design s.r.o.**  
 Headquarters: Werferová 1, Košice 1, Slovensko, 040 11

Sales representative: **Ing. Matúš ORLOVSKÝ**  
 Contact: **+421 903 403 467**

## RIPPER - Rope Tester TYPE – TL/S-02



### TECHNICAL PARAMETERS:

**Max pulling power:** 3 typorady: 250kN, 350kN, 250kN~500kN

**Power unit:** Computer controlled hydraulic unit with one hydraulic cylinder

**Control system:** SIEMENS S7-1200, WIN10

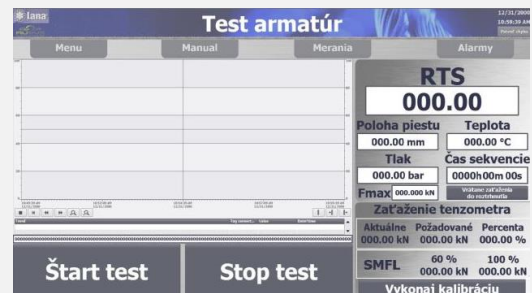
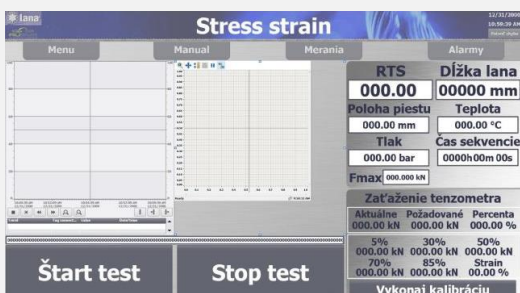
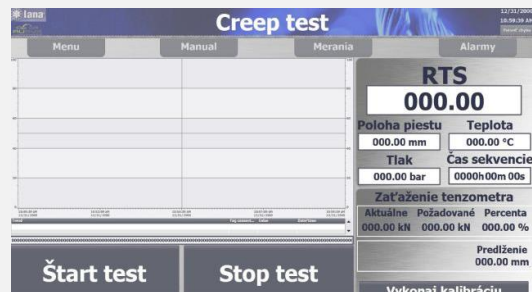
**Aplikation:** SCADA – for vizualization and control of the machine. Aplikation to store data and display the results as graphs with output to a printer

**Display unit:** 24“ monitor

**Operator safety:** Full-length fencing or full-length cover and opening panels.

**Frame construction:** Steel construction made of S355 material with length of 15m. The length and color design varies according to specific customer requirements. Mounting – anchoring to the floor and assembly of pre-prepared weldments using screw connections.

### TYPE OF TESTING: 1., Pull test, 2., Creep test, 3., Stress strain, 4., Armature test.





MDB Design s.r.o., Werferova 1, 040 11 Košice, www.mdbdesign.sk, info@mdbdesign.sk

Business name: **MDB Design s.r.o.**  
Headquarters: Werferová 1, Košice 1, Slovensko, 040 11

Sales representative: **Ing. Matúš ORLOVSKÝ**  
Contact: **+421 903 403 467**

## CONTROL: 1., Automat, 2., Manual

